

fsi
power **tech**



force
strength
intelligence



Day or Night
always ready

Number 1
wide range of power

Several reasons for stump cutting



A stump attracts rubbish



A stump does not look nice



A stump could be dangerous for road users damage machines such as: Mowers, snow blades etc.



Avoid unhealthy fungi and weeds



Avoid danger this was 11 hours of heavy work and a lot of clean up and waste



Increased risk for damaging cables when excavator working so deep



25 years later still annoying also when mowing the lawn

Table of content

Tractor pto drive

- ST 27 T.....4
- ST 65 T.....5

Walk behind

- ST 20 B 6-7

Self propelled

- ST 65 D 8-9
- ST 27 B10
- ST 27 D11

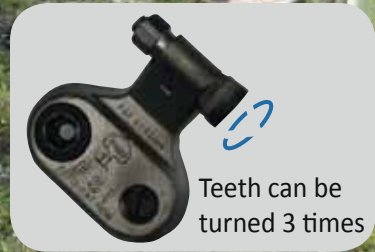
Excavator hydraulic drive

- ST 20 H12
- ST 27 H12
- ST 50 H12
- ST 65 H13

Mini loader hydraulic drive

- ST 20 H14
- ST 27 H14
- ST 50 H14
- ST 20 HS15
- ST 27 HS15
- ST 50 HS15

Company16



How a stump cutter works

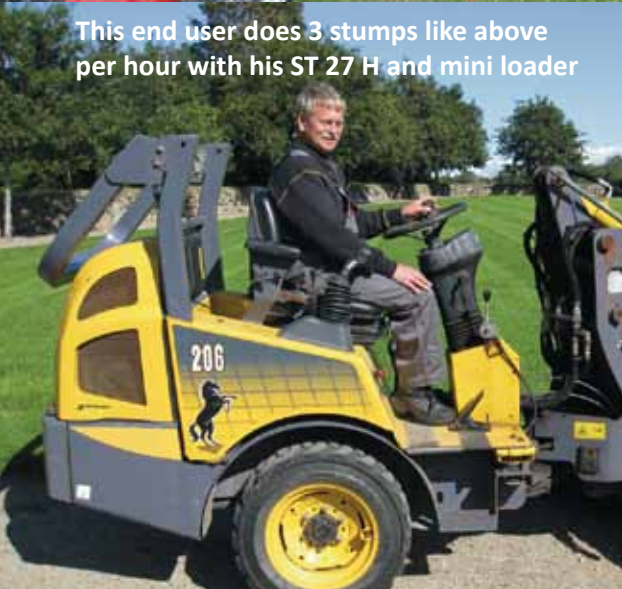
Here explanations and details about the fundamental way of cutting for all models.

Teeth placed on both sides of the disc cut the stump.

Various teeth placement on the disc enables the cutting size.



This end user does 3 stumps like above per hour with his ST 27 H and mini loader



Approx cutting times for a stump with a diameter:

\varnothing 40 cm \varnothing 65 cm \varnothing 105 cm
 (15 cm above ground + 15 cm below ground)

- ST 27 T..... 6 min..... 12 min.....35 min
- ST 65 T..... 3 min..... 6 min.....15 min
- ST 20 B 12 min..... 25 min.....90 min
- ST 27 B 8 min..... 15 min.....45 min
- ST 27 D 7 min..... 12 min.....35 min
- ST 65 D 3 min..... 6 min.....15 min
- ST 20 H + ● HS..... 18 min..... 30 min.....100 min
- ST 27 H + ● HS..... 12 min..... 25 min.....75 min
- ST 50 H + ● HS..... 7 min..... 18 min.....45 min
- ST 65 H + ● HS..... 3 min..... 6 min.....15 min

Above figures based on experiences from end users may vary according to tree sort, soil type, oil capacity, operator etc.





Easy regulation of speed
of the hydraulic movements
Standard ST 27 T and ST 65 T



Stump
cutting time
on page 3

ST 27 T

Power required.....25-60 HP (20-45 KW)
PTO (included) 540 rpm
Hydr. connection1 double or single + return
Oil flow max 35 L/min (max 180 bar)

Cutting disc w/teeth ϕ 470 mm
Teeth number (ϕ size)..... 20 (20,5 mm)

3 movementsabove/below 400/400 mm
all controlledwidth 1400-1750 mm
from tractor cab length 300 mm

Machine size: Height 1200 mm
Length*width 2000*1350 mm
Weight 360 kg



Operation handles
for placement
in tractor cab

Support legs are
height adjustable
for both ST 27 T and ST 65 T



Option for ST 65 T getting closer but still safe and easy

ST 65 T

Power required..... 70-100 HP (50-75 KW)
 PTO (included)..... 540 rpm
 Hydr. connection1 double or single + return
 Oil flow max 90 L/min (max 180 bar)

Cutting disc w/teeth \varnothing 720 mm
 Teeth number (\varnothing size)..... 28 (28,0 mm)

4 movementsabove/below 600/500 mm
all controlled width 1400-2200 mm
from..... length 650 mm
tractor cab..... lift/lowering guard

Options: Door operating closer
 Remote control.....electric control box

Machine size: Height 1700 mm
 Length*width 3200*1520 mm
 Weight 700 kg



Option for ST 65 T electric remote control and electric valve block



Powerful machine



Result

18 min.

ST 20 B



Easy stump cutting

80 cm.

Ball bearings ease the work
Wheels do not move

80 cm.

No operator force to make this movement

Ball bearings between stump cutter and wheel chassis



Typical cut size



Cutting above/below ground 300/200 mm



Easy to move forward when material building up ↙

Just release one brake →

Then twist left ↙

Handy ergonomic and adding much forward power

2nd wheel if hindrance just do it opposite



← Rubber vibration absorber 4 pcs.

ST 20 B

Engine..... petrol 13 HP (9,5 KW)
 Honda..... GX 390
 Fuel tank..... 6,1 L (≈ 3 hours work)

Cutting disc w/teeth ø 370 mm
 Teeth number (ø size)..... 8 (17,5 mm)
 Cutting start/stop centrifugal clutch
 V-belts 1 double power
 Wheels 2..... ø 365*100 mm 6 ply

Machine size: Height 1100 mm
 Length*width 1800*700 mm
 Weight 125 kg



Standard balanced



lifting point



Drawbar (option) moving fast from job to job

Very high level of professional power and technology

Extremely big cutting width 2000 mm

Cutting height/below ground 600/400 mm

4 WD and vertical pendling

Goes every where

Very large cutting size (more explanation page 3)

Storage box both sides

Width 1400 mm without twin wheels only 890 mm



Extremely big cutting width **2000 mm** no unnecessary moving around

Radio or cable remote control



Digging above stump was more than **5 hours** of work lots of up digging a very big hole and a 3 ton stump with roots to waste.
Stump cutting with this professional heavy duty powerful machine would only have been **15 min.** and just chips to recycle.



Easy also at transport

ST 65 D
 Engine..... diesel 4 cyl. 67 HP (50 KW)
 LombardiniLDW 2204/T, water cooled
 Fuel tank..... 40 L (≈ 15 hours work)
 Cutting disc w/teeth ø 720 mm
 Teeth number (ø size).....28 (28,0 mm)
 Cutting width speed proportional
 Cutting start/stop manual clutch
 V-belts 3 + 3
 Remote control..... 5 m electric cable
 Optionradio remote control
 4WD.....4 hydraulic wheel motors
 Wheels 4+2..... ø 450*210 mm 10 ply
 Diff lock..... remote controlled
 Size: Height*length.....1375*3175 mm
 Width.....1400/890 mm w/out twin
 Weight 1350 kg

Safety stop

Storage box

fsi

Hour meter

ST 27 B

Safety for operator
less dirt on machine

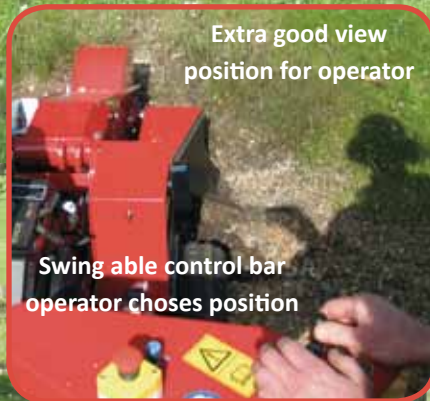
Typical cut size

Above ground cutting
600 mm

Below ground cutting
330 mm



Turf care tyre



Extra good view
position for operator

Swing able control bar
operator choses position

Horizontal placement
of engine so always
optimal lubrication

Turn table provides
wide movements

Very big cutting width 1350 mm.
no unnecessary moving around

ST 27 B

Engine..... petrol 2 cyl. 27 HP (20 KW)
Kohler Command Pro., air cooled
Fuel tank..... 26 L (≈ 8 hours work)

Cutting disc w/teeth ø 470 mm
Teeth number (ø size)..... 18 (20,5 mm)
Cutting width speed adjustable
Cutting start/stopelectric clutch
V-belts2 power and 3 maintain free

2WD wheels 400*170 mm 8 ply
Hydr. steering wheels400*100 mm

Machines size: Height.....1375 mm
Length*width2600*880 mm
Weight 600 kg



Easy passage



2 WD for load track



Storage box

Safety for operator
less dirt on machine

good position
for operator

Typical cut size

Very big cutting width 1350 mm
intensive cutting work

ST 27 D

Engine..... diesel 3 cyl. 27 HP (20 KW)
Lombardini Focs 1003, water cooled
Fuel tank..... 27 L (≈ 12 hours work)

Cutting disc w/teeth ø 470 mm
Teeth number (ø size)..... 18 (20,5 mm)
Cutting width speed adjustable
Cutting start/stopelectric clutch
V-belts 2 power and 3 maintain free

2WD wheels 400*170 mm 8 ply
Hydr. steering wheels400*100 mm

Machine size: Height1100 mm
Length*width3000*880 mm
Weight 700 kg

Cutting above ground
600 mm

Cutting below ground
330 mm

Behind operation
w/swing able
control bar

6 min. and 15 seconds
and only 2 minuetts left

Easy and safe lifting
device (option)

w/twin wheels (option)
the width is 1350 mm
without only 880 mm

This operation



ST 27 H

Stump cutting time on page 3

Advantage of cutting versus digging:

Cutting is much faster than extensive digging.

No heavy material to waste, as the chips can be spread on the spot.

The earth around the stump remains untouched and with intact humus.

Planting holes can be cut in the right depth, so no stratum mix of earth and no drying up below new plant



ST 20 H



Digging this stump took more than 5 hours lots of up digging a large hole and a 3 ton stump with roots to waste.

Stump cutting would have been 1 to 1½ hour and only chips to recycle.

	ST 20 H	ST 27 H	ST 50 H
Excavator size	1,5 – 2,5 ton.....	3 – 7 ton	8 – 14 ton
Power required.....	15-25 HP.....	20-35 HP	35-70 HP
	12-20 KW.....	15-25 KW	25-50 KW
Oil flow (max 250 bar)	30-45 L/min.....	40-60 L/min	80-130 L/min
Hoses*quick couplers	2*½"	3*½"	3*non
Pressure free to tank	2nd hose.....	3rd hose	3rd hose
Cutting disc w/teeth	ø 370 mm.....	ø 470 mm	ø 570 mm
Teeth number (ø size).....	12 (17,5 mm)...	18 (20,5 mm)	20 (20,5 mm)
Machine size: Height	475 mm.....	600 mm	725 mm
Length*width	600*500 mm....	800*650 mm	1050*650 mm
Weight	70 kg.....	125 kg	200 kg

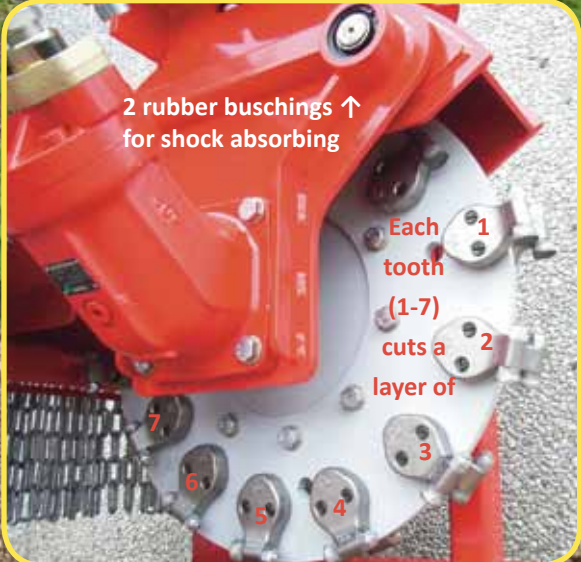
Unpainted top plate is standard for fitting on an attachment device



ST 50 H



ST 65 H



2 rubber bushings ↑ for shock absorbing

Each tooth (1-7) cuts a layer of



Pure power

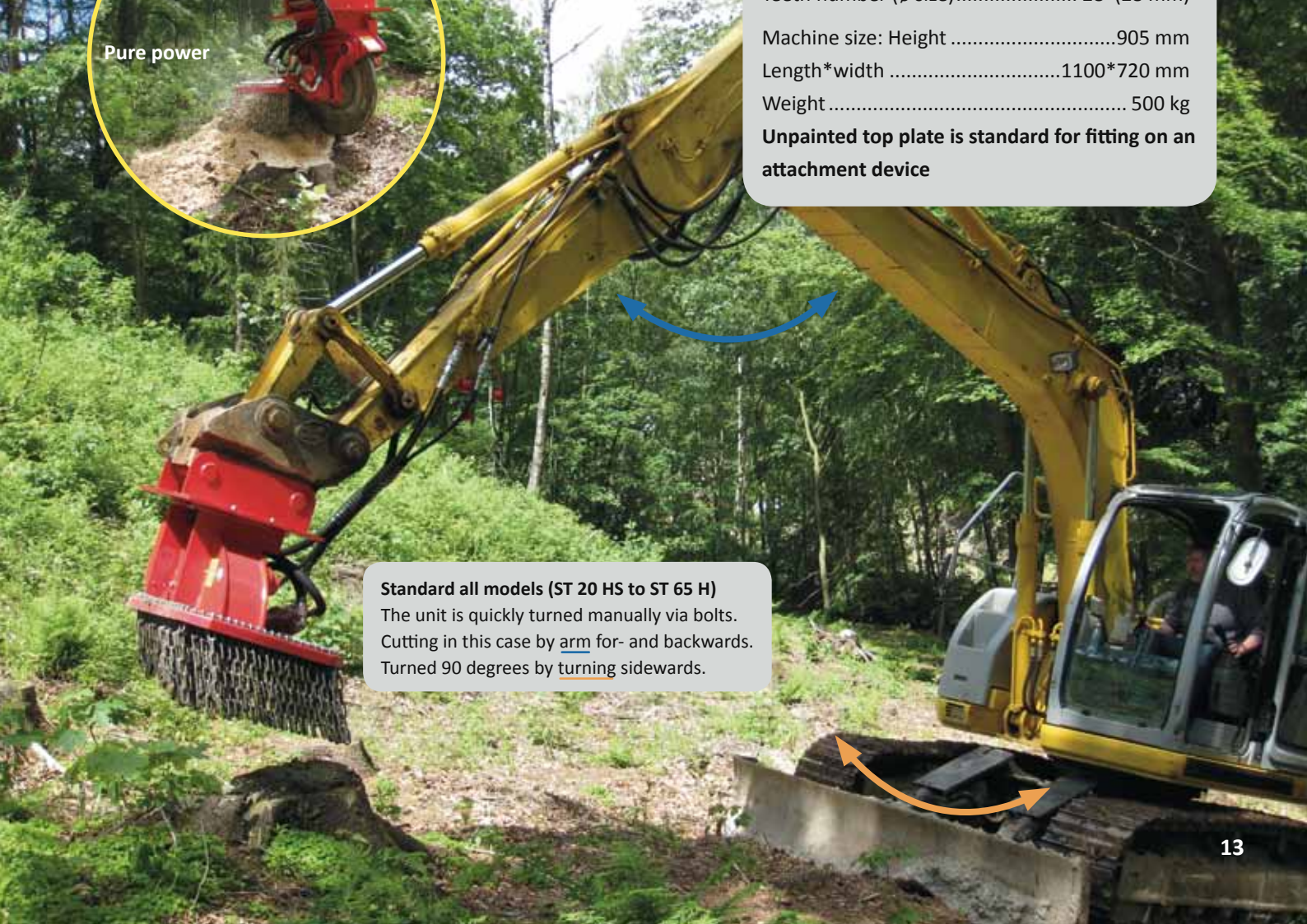
ST 65 H

Excavator size 12 – 20 ton
 Oil flow (max 350 bar) 100-130 L/min
 Oil flow (max 350 bar) 135-160 L/min
 Oil flow (max 350 bar) 165-200 L/min
 3 hoses (2*1") and quick couplers not included
 3rd hose (½") always pressure free to tank

Cutting disc w/teeth ø 720 mm
 Teeth number (ø size) 28 (28 mm)

Machine size: Height 905 mm
 Length*width 1100*720 mm
 Weight 500 kg

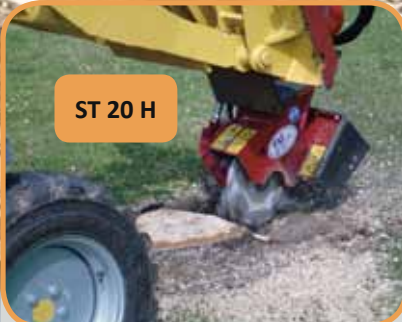
Unpainted top plate is standard for fitting on an attachment device



Standard all models (ST 20 HS to ST 65 H)
 The unit is quickly turned manually via bolts.
 Cutting in this case by arm for- and backwards.
 Turned 90 degrees by turning sideways.



Using the articulated steering of the mini loader for swinging, the cutting is easily controlled. In this case the full width is no problem.



ST 20 H

All models can be turned 180°, if better view this way

ST 27 H

	ST 20 H	ST 27 H	ST 50 H
Oil flow (max 250 bar).....	30-45 L/min	40-60 L/min	80-130 L/min
Hoses*quick couplers.....	2*½"	3*½"	3*non
Pressure free to tank.....	2nd hose	3rd hose	3rd hose
Cutting disc w/teeth.....	ø 370 mm	ø 470 mm	ø 570 mm
Teeth number (ø size).....	12 (17,5 mm)	18 (20,5 mm)	20 (20,5 mm)

Unpainted plate is standard for fitting on an attachment device



ST 27 HS

HS is with swing cylinders, cutting is operated from electric control box or loader joystick



	ST 20 HS	ST 27 HS	ST 50 HS
Oil flow (max 250 bar)	30-45 L/min	40-60 L/min	80-130 L/min
Hoses*quick couplers	2*½"	3*½"	3*non
Pressure free to tank	2nd hose	3rd hose	3rd hose
Cutting disc w/teeth	ø 370 mm	ø 470 mm	ø 570 mm
Teeth number (ø size)	12 (17,5 mm)	18 (20,5 mm)	20 (20,5 mm)

Unpainted plate is standard for fitting on an attachment device



Roadside stump cutting saves time on grass mowing, eliminates danger for road users and damage to mower and then it looks good.





FSI power-tech ApS
Erhvervsparken 2
DK-7160 Tørring

☎ +45 7580 5558
mail@fsi.dk
www.fsi.dk



Company goal:

Developing, designing, manufacturing, testing and selling stump cutters. Offering professional quality machines and know how. We are highly dedicated to this issue 365 days a year. The range of machines is sold world wide.

In addition for all machines:

- Very easy to operate
- Low wear and easy maintenance
- Detailed quality in selection of components, powder paint etc.

Dealer:

Importer:

Number 1
wide range of power

force strength intelligence