



Diamond Tools and Equipment
for Construction and Infrastructure

890 SERIES HYDRAULIC SAW

890 SERIES PRODUCT SPECIFICATIONS - 30LPM

WEIGHT	12.4 kg with 38 cm bar/chain and 30 cm hose
BAR LENGTH	Up to 63 cm
MOTOR SPEED	6100 rpm
POWERHEAD DIMENSIONS	58.5 cm length 26.5 cm height 24 cm width
TORQUE	13.8 Nm
HORSEPOWER	11.5 hp (8.6 kW)
HYDRAULIC SUPPLY	30 lpm, 172.5 bar
NOISE LEVEL	98 dB @ 1 m (Sound pressure level) 107 dB @ 1m (Sound power level)
VIBRATION LEVEL	2.0 m/second ² (front handle) 6.0 m/second ² (rear handle)
WATER SUPPLY	Minimum 1.5 bar

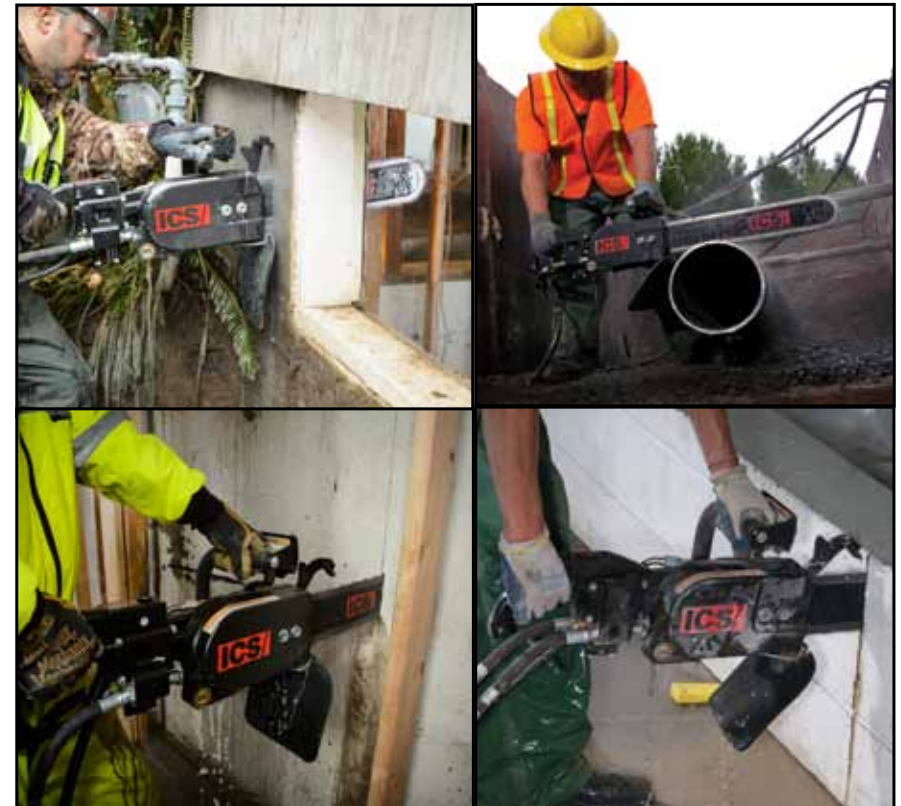
890 SERIES PRODUCT SPECIFICATIONS - 45LPM

WEIGHT	12.4 kg with 38 cm bar/chain and 30 cm hose
BAR LENGTH	Up to 63 cm
MOTOR SPEED	6500 rpm
POWERHEAD DIMENSIONS	58.5 cm length 26.5 cm height 24 cm width
TORQUE	19.2 Nm
HORSEPOWER	17.5 hp (13 kW)
HYDRAULIC SUPPLY	45 lpm, 172.5 bar
NOISE LEVEL	98 dB @ 1 m (Sound pressure level) 107 dB @ 1 m (Sound power level)
VIBRATION LEVEL	2.0 m/second ² (front handle) 6.0 m/second ² (rear handle)
WATER SUPPLY	Minimum 1.5 bar

Product data shown is rated based on maximum input conditions and efficiency assumptions and may vary dependent on power supply.

REDESIGNED WITH THE USER IN MIND

The ICS 890 Series hydraulic cutting system offers the superior strength of FORCE4® technology. From the redesigned, more durable rear handle, to the easy to replace drive sprocket, this saw is engineered to stand up to your toughest jobs. In a package that exceeds industry standards this sleek powerhouse is packed with features designed to make it work as hard as you do.





Diamond Tools and Equipment
for Construction and Infrastructure

890 SERIES HYDRAULIC SAW

