

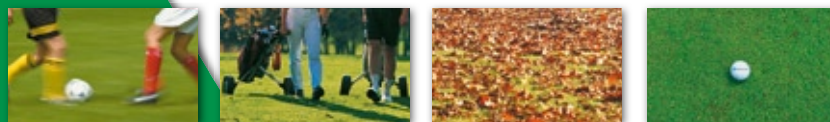


 **Wiedemann**

Universal turf compact machine

*Sweeping
Verticutting
Flail mowing
High discharge*

SUPER 500



SUPER 500: the new standard in turf maintenance

The **SUPER 500** is compact rugged, and multi-talented. Park grounds, recreational areas, extensively maintained areas, ecological meadows, sport grounds, and golf courses are its "home turf". Whether it's sweeping, verticutting, mowing, or collecting grass and leaves, you will be impressed by the **SUPER 500** from the first cut in spring until autumn.

The **SUPER 500** delivers excellent quality of work. The parallelogram-guided sweeper head ensures that implements maintain an optimal working position at all times. This is a great advantage on undulating surfaces. You can select between the brush-type and the multi-purpose sweeper head. Your choice of sweeper head depends on your requirements.

The multi-purpose sweeper head is equipped as standard with an additional depth control roller to prevent scalping on uneven turf.

The multi-purpose sweeper head can be equipped with various implements for a variety of applications.

The implements are manufactured from wear-resistant special grade steel and have an articulated frame. This ensures excellent work results over the full working width. For verticutting work, you can choose between cutting blade spacings of 19 mm, 38 mm or 57 mm.

Implement changing is simple and can be done without tools.



Sweeping / collecting leaves

Collecting grass clippings or leaves without turf damage with brush-type head or multi-purpose sweeper head.







Verticutting

Verticutting with simultaneous collecting of material. Verticutting spacing 19 mm, 38 mm or 57 mm.



The SUPER 500 can be equipped with two different sweeper heads:

Brush sweeper head	Implement	Application
	<i>Brush cylinder</i>	<i>Sweeping and collecting grass clippings, leaves and debris.</i>
Multi-function sweeper head	Implement	Application
 <i>Equipped as standard with wind paddle</i>	<i>Verticutting blade</i> 	<i>Verticutting in dry and wet conditions. Collecting grass clippings, leaves and debris.</i>
	<i>Flail blade</i> 	<i>Flail-type mowing and collecting grass clippings, leaves and debris in dry and wet conditions.</i>





Flail mowing

Mowing and collecting in a single operation. For fast and cost-effective maintenance of ecological meadows, golf courses, park grounds, etc.



High discharge

The parallelogram-guided high discharge allows dumping from any lifting height.

The air flow path



The sophisticated working concept

The material is collected by the blades and transported into the container by a powerful air flow. The air flow path ensures complete filling of the container. The dust-laden air stream leaves the container through clearly defined air outlets and is blown downwards directly onto the surface through a special cover flap. This reduces dust emission into the air, which benefits both the driver and the environment.

The high discharge

The high discharge allows the container to be emptied in any desired lifting height. This provides significant time savings since, where low overhead loading heights are required, the container does not initially have to be lifted to highest position to empty the container.

The tyres

Special attention was paid to the use of tyres with a large contact area and low ground pressure to protect the turf. You can choose between two or four wide turf tyres with swinging axle, depending on your requirements.

The combination of four turf tyres and articulated axle is particularly ideal on undulating ground as the swinging axle always maintains an even load distribution to the four wheels.

The golf course kit

The SUPER 500 can be equipped with the optional golf course kit, specially designed for use on heavily undulating terrain. The golf course kit consists of a front steel roller and two additional lateral anti scalp rollers which reliably prevent scalping.

The drive

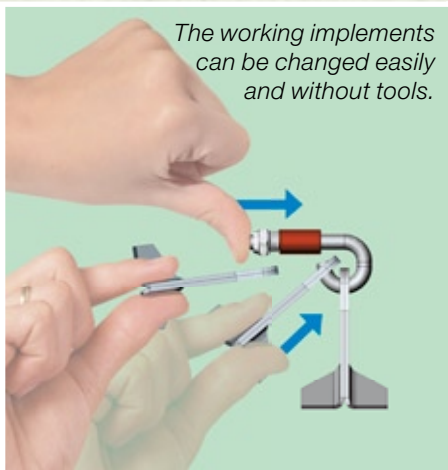
The swinging parallelogram-guided sweeper head is driven by a double V-belt (brush-type sweeper head) or ribbed V-belt (multi-purpose sweeper head).

Ease of operation

The hydraulic operating unit of the SUPER 500 is easy to access from the tractor seat. The SUPER 500 can be operated even more conveniently with the optional electromagnetic remote control.

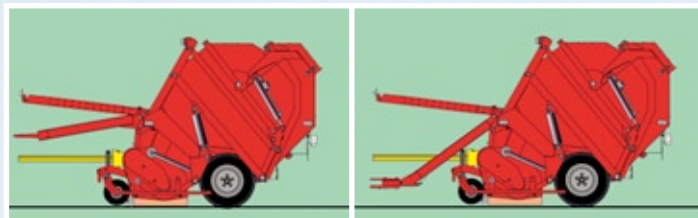


The working implements can be changed easily and without tools.



The demands on a multitalent

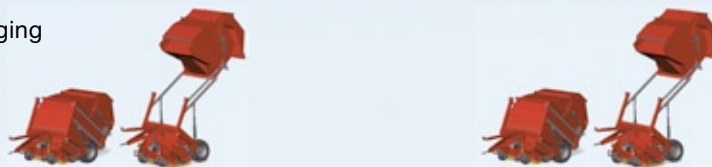
- All-season, cost-efficient, and effective use of the machine.
- Parallelogram-guided sweeper head.
- Ease of operation of the control elements from the tractor's seat.
- Long service life thanks to rugged quality and excellent build quality of all materials.
- Easy and safe access to all components for cleaning and maintenance work.
- Easy, fast, and tool-less implement changing.
- Parallelogram-guided high discharge.
- Pull-type machine for better cornering (prevents swinging out of the machine).
- Excellent adaptation to undulating terrain.
- High level of occupational safety through TÜV approved safety equipment.



High hitch point

Low hitch point

Depending on tractor type, the SUPER 500 can be attached to the high hitch point or to the low hitch point.



TECHNICAL DATA	SUPER 500	SUPER 500
Model:	Brush sweeper head	Multi-purpose sweeper head
Function:	Brush sweeper head with parallelogram guiding system	Multi-purpose sweeper head with parallelogram guiding system
Sweeping:	Yes	Yes
Verticutting:	No	Yes (choice of distance 19/38/57 mm)
Flail mowing:	No	Yes
Anti scalp roller:	Yes (optional)	Centred, height adjustable
Implement change:	-	Yes (no tools required)
Working width in cm:	160	160
Volume capacity in cubic metres:	2,5	2,5
Dumping (hydraulic):	High dumping (up to 210 cm)	High dumping (up to 210 cm)
Working height adjustment:	Slotted spacer rings (adjustment range 15 cm)	
Drawbar:	Clevis swinging drawbar	
Drive:	PTO shaft 540 RPM	PTO shaft 540 RPM
Minimum power requirement for tractor:	11 kW / 15 HP	22 kW / 30 HP
Working roller:	Dual V ribbed belt, automatic tensioning	V ribbed belt drive (10 PL), automatic tensioning
Front tyres:	2 x (11 x 4.00-5)	2 x (11 x 7-4)
Rear tyres:	2 x (23 x 10.50)	2 x (23 x 10.50)
Machine length in cm:	316	316
Machine width in cm:	193	207
Machine height in cm:	177	177
Tare weight in kg approx.:	900	1000
Gross vehicle weight in kg approx.:	1400	1400
Maximum drawbar load in kg:	180	180
Optional		
Pendulum carriage:	4 x (18 x 8.50)	4 x (18 x 8.50)
Golf course kit:	No	Height adjustable sensing roller with wiper and side anti scalp rollers
Electromagnetic remote control:	Yes	Yes
Lighting:	Yes	Yes

Descriptions and illustrations are non-binding. We reserve the right to modify the construction and design.



Optimal adaptation to terrain



Ease of maintenance



Service hatch



Golf course kit

For more information, please contact:



Wiedenmann GmbH
Am Bahnhof
89192 Rammingen
GERMANY
Telefon +49 (0) 73 45/953-0
Telefax +49 (0) 73 45/ 953-233
info@wiedenmann.de
www.wiedenmann.de